

# PORTAL GOAL SHEET MANUAL



Copyright © 2003-2006 AMC Convergent IT, a Division of Australis Microcomputer Pty Ltd  
All rights are reserved world-wide.

# PosPortal Screens

Settings are controlled by the portal. Budgets are entered via the portal

## Mode 1

No individual budget per Hour

Hour	Budget	Budget Met	Running Sales	Running Count	Running Average	Sales for Hour	Customers for Hour	Average for Hour
9	2,600.00	False	\$55.80	4	\$13.95	\$55.80	4	\$13.95
10	2,600.00	False	\$399.10	17	\$23.48	\$343.30	13	\$26.41
11	2,600.00	False	\$794.50	31	\$25.63	\$395.40	14	\$28.24
12	2,600.00	False	\$1,242.15	49	\$25.35	\$447.65	18	\$24.87
13	2,600.00	False	\$1,437.85	58	\$24.79	\$195.70	9	\$21.74
14	2,600.00	False	\$1,799.20	66	\$27.26	\$361.35	8	\$45.17
15	2,600.00	False	\$2,225.00	82	\$27.13	\$425.80	16	\$26.61
16	2,600.00	False	\$2,546.60	92	\$27.68	\$321.60	10	\$32.16
17	2,600.00	True	\$2,818.60	102	\$27.63	\$272.00	10	\$27.20
18	2,600.00	True	\$3,012.10	110	\$27.38	\$193.50	8	\$24.19
19	2,600.00	True	\$3,029.60	111	\$27.29	\$17.50	1	\$17.50

## Mode 2

### Individual Budget per Hour

**Time Hour - Version 1.00**

Sun	Mon	Tue	Wed	Thu	Fri	Sat
2	3	4	5	6	7	1
9	10	11	12	13	14	15
16	17	18	19	20	21	22
23	24	25	26	27	28	29
30	31					

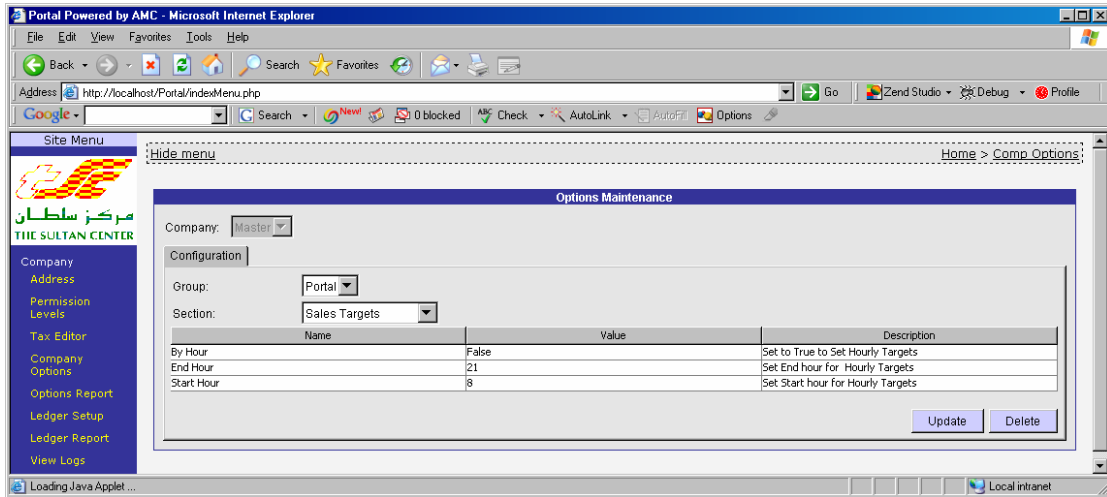
Saturday 01 October 2005

**Day Budget \$2,600.00**

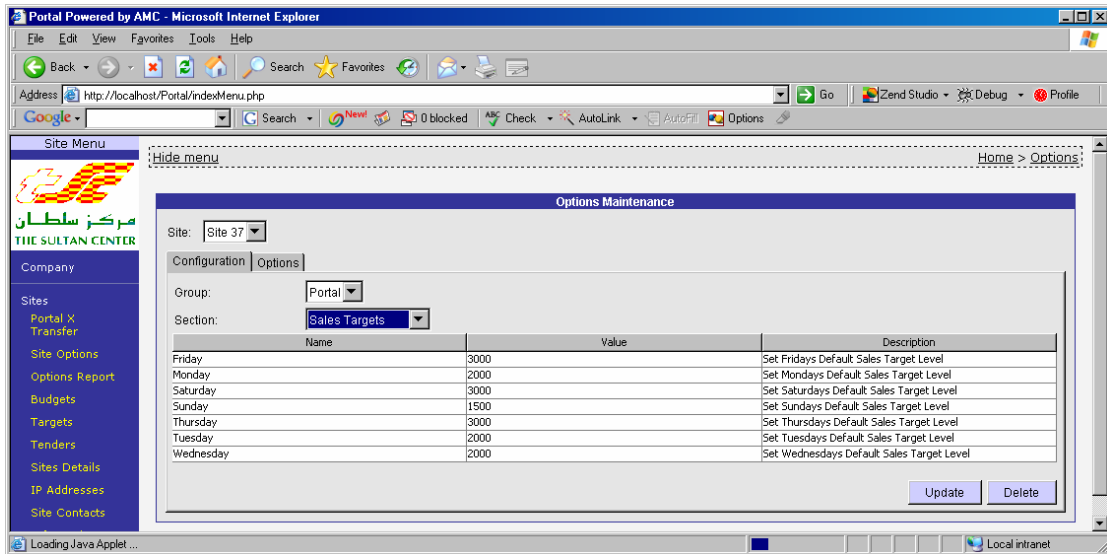
Hour	Budget	Budget Met	Running Sales	Running Count	Running Average	Sales for Hour	Customers for Hour	Average for Hour
8	\$0.00	True	\$0.00	0	\$0.00	\$0.00	0	\$0.00
9	\$0.00	True	\$55.80	4	\$13.95	\$55.80	4	\$13.95
10	\$100.00	True	\$399.10	17	\$23.48	\$343.30	13	\$26.41
11	\$300.00	True	\$794.50	31	\$25.63	\$395.40	14	\$28.24
12	\$600.00	True	\$1,242.15	49	\$25.35	\$447.65	18	\$24.87
13	\$900.00	True	\$1,437.85	58	\$24.79	\$195.70	9	\$21.74
14	1,900.00	False	\$1,799.20	66	\$27.26	\$361.35	8	\$45.17
15	2,100.00	True	\$2,225.00	82	\$27.13	\$425.80	16	\$26.61
16	2,300.00	True	\$2,546.60	92	\$27.68	\$321.60	10	\$32.16
17	2,300.00	True	\$2,818.60	102	\$27.63	\$272.00	10	\$27.20
18	2,300.00	True	\$3,012.10	110	\$27.38	\$193.50	8	\$24.19
19	2,300.00	True	\$3,029.60	111	\$27.29	\$17.50	1	\$17.50
20	2,300.00	False	\$0.00	0	\$0.00	\$0.00	0	\$0.00
21	2,300.00	False	\$0.00	0	\$0.00	\$0.00	0	\$0.00

# Portal Default

## Company Level



## Site Level



## Daily Budget / Target Edit

Portal Powered by AMC - Microsoft Internet Explorer

Address: http://localhost/Portal/indexMenu.php

Site Menu: Hide menu

THE SULTAN CENTER

Company

Sites: Portal X, Transfer, Site Options, Options Report, Budgets, Targets, Tenders, Sites Details, IP Addresses, Site Contacts, Information

Access, Support, PDT Emulator, Menus, Logout

Day Target / Goal Maintenance

Date: 01 Oct 2005

Site: Site 26

Day Target / Budget: \$2600.00

Current System settings : Target by Day only - Refer Company Option

Hour 00:	\$0.00	Hour 01:	\$0.00
Hour 02:	\$0.00	Hour 03:	\$0.00
Hour 04:	\$0.00	Hour 05:	\$0.00
Hour 06:	\$0.00	Hour 07:	\$0.00
Hour 08:	\$0.00	Hour 09:	\$0.00
Hour 10:	\$0.00	Hour 11:	\$0.00
Hour 12:	\$0.00	Hour 13:	\$0.00
Hour 14:	\$0.00	Hour 15:	\$0.00
Hour 16:	\$0.00	Hour 17:	\$0.00
Hour 18:	\$0.00	Hour 19:	\$0.00
Hour 20:	\$0.00	Hour 21:	\$0.00
Hour 22:	\$0.00	Hour 23:	\$0.00

Save

Portal Powered by AMC - Microsoft Internet Explorer

Address: http://localhost/Portal/indexMenu.php

Site Menu

THE SULTAN CENTER

Company

Sites: Portal X, Transfer, Site Options, Options Report, Budgets, Targets, Tenders, Sites Details, IP Addresses, Site Contacts, Information

Access, Support, PDT Emulator, Menus

Update Complete

Day Target / Goal Maintenance

Date: 01 Oct 2005

Site: Site 26

Day Target / Budget: \$2600.00

Current System settings : Target By Hour , Start hour 8, End hour 21 - Refer Company Option

Hour 00:	\$0.00	Hour 01:	\$0.00
Hour 02:	\$0.00	Hour 03:	\$0.00
Hour 04:	\$0.00	Hour 05:	\$0.00
Hour 06:	\$0.00	Hour 07:	\$0.00
Hour 08:	\$0.00	Hour 09:	\$100.00
Hour 10:	\$200.00	Hour 11:	\$300.00
Hour 12:	\$300.00	Hour 13:	\$1000.00
Hour 14:	\$200.00	Hour 15:	\$200.00
Hour 16:	\$0.00	Hour 17:	\$0.00
Hour 18:	\$0.00	Hour 19:	\$0.00
Hour 20:	\$0.00	Hour 21:	\$0.00
Hour 22:	\$0.00	Hour 23:	\$0.00

Save

# Monthly Budget

**Budget Maintenance**

Date: 01 Oct 2005  
 Site: Site 26  
 Monthly Budget: \$72100.00

Date	Budget	Day Of Week
01 Oct 2005	\$2600.00	Saturday
02 Oct 2005	\$1500.00	Sunday
03 Oct 2005	\$2000.00	Monday
04 Oct 2005	\$2000.00	Tuesday
05 Oct 2005	\$2000.00	Wednesday
06 Oct 2005	\$3000.00	Thursday
07 Oct 2005	\$3000.00	Friday
08 Oct 2005	\$3000.00	Saturday
09 Oct 2005	\$1500.00	Sunday
10 Oct 2005	\$2000.00	Monday
11 Oct 2005	\$2000.00	Tuesday
12 Oct 2005	\$2000.00	Wednesday
13 Oct 2005	\$3000.00	Thursday
14 Oct 2005	\$3000.00	Friday
15 Oct 2005	\$3000.00	Saturday
16 Oct 2005	\$1500.00	Sunday
17 Oct 2005	\$2000.00	Monday
18 Oct 2005	\$2000.00	Tuesday
19 Oct 2005	\$2000.00	Wednesday
20 Oct 2005	\$3000.00	Thursday
21 Oct 2005	\$3000.00	Friday
22 Oct 2005	\$3000.00	Saturday
23 Oct 2005	\$1500.00	Sunday
24 Oct 2005	\$2000.00	Monday
25 Oct 2005	\$2000.00	Tuesday
26 Oct 2005	\$2000.00	Wednesday
27 Oct 2005	\$3000.00	Thursday
28 Oct 2005	\$3000.00	Friday
29 Oct 2005	\$3000.00	Saturday
30 Oct 2005	\$1500.00	Sunday
31 Oct 2005	\$2000.00	Monday

# Time Hour report

**Report Options**

Options Filters  
 Site: Site 26 By Day Date 01 Oct 2005 Display As Table

**Accumulative Sales [all sales] (\* Target Reached) by Day: Site 26**

Time	Monday 26-Sep-2005	Tuesday 27-Sep-2005	Wednesday 28-Sep-2005	Thursday 29-Sep-2005	Friday 30-Sep-2005	Saturday 01-Oct-2005	Sunday 02-Oct-2005	Total:
Targets:	\$2,000.00	\$2,000.00	\$2,000.00	\$3,000.00	\$3,000.00	\$2,600.00	\$1,500.00	\$16,100.00
8:00 - 8:59						\$55.80		\$55.80
9:00 - 9:59						\$403.25		\$403.25
10:00 - 10:59						\$816.70		\$816.70
11:00 - 11:59						\$1,265.95		\$1,265.95
12:00 - 12:59						\$1,463.40		\$1,463.40
13:00 - 13:59						\$1,838.25		\$1,838.25
14:00 - 14:59						\$2,268.65		\$2,268.65
15:00 - 15:59						\$2,611.20 *		\$2,611.20
16:00 - 16:59						\$2,884.80 *		\$2,884.80
17:00 - 17:59						\$3,094.60 *		\$3,094.60
18:00 - 18:59						\$3,116.50 *		\$3,116.50
Total:						\$3,116.50 *		\$3,116.50

Note: Money values include non item-related sales or transactions

## Franchise Goal Sheet report (no Hourly Targets)

Portal Powered by AMC - Microsoft Internet Explorer

Address: http://localhost/Portal/indexMenu.php

Franchise Menu: Hide menu Print Home > Goal Sheet

Report Options

Site: Site 26 Date: 01 Oct 2005

Daily Goal Sheet for 01 Oct 2005 - Daily Budget \$2,600.00 - Site 26 : Amounts are net of Sales Discount and Excluded Departments

At	Met	Accumulative Sales	Accumulative Customers	Accumulative Average	Sales For Hour	Customers for Hour	Average for Hour
9AM		\$55.80	4	\$13.95	\$55.80	4	\$13.95
10AM		\$399.10	17	\$23.48	\$343.30	13	\$26.41
11AM		\$794.50	31	\$25.63	\$395.40	14	\$28.24
NOON		\$1,242.15	49	\$25.35	\$447.65	18	\$24.87
1PM		\$1,437.85	58	\$24.79	\$195.70	9	\$21.74
2PM		\$1,799.20	66	\$27.26	\$361.35	8	\$45.17
3PM		\$2,225.00	82	\$27.13	\$425.80	16	\$26.61
4PM		\$2,546.60	92	\$27.68	\$321.60	10	\$32.16
5PM	✓	\$2,818.60	102	\$27.63	\$272.00	10	\$27.20
6PM	✓	\$3,012.10	110	\$27.38	\$193.50	8	\$24.19
7PM	✓	\$3,029.60	111	\$27.29	\$17.50	1	\$17.50

Powered by AMC

## Hourly Targets

Portal Powered by AMC - Microsoft Internet Explorer

Address: http://localhost/Portal/indexMenu.php

Franchise Menu: Hide menu Print Home > Goal Sheet

Report Options

Site: ALL Date: 01 Oct 2005

Daily Goal Sheet for 01 Oct 2005 - Daily Budget \$9,600.00 - ALL : Amounts are net of Sales Discount and Excluded Departments

At	Goal	Met	Accumulative Sales	Accumulative Customers	Accumulative Average	Sales For Hour	Customers for Hour	Average for Hour
9AM		✓	\$55.80	4	\$13.95	\$55.80	4	\$13.95
10AM	\$100.00	✓	\$399.10	17	\$23.48	\$343.30	13	\$26.41
11AM	\$300.00	✓	\$794.50	31	\$25.63	\$395.40	14	\$28.24
NOON	\$600.00	✓	\$1,242.15	49	\$25.35	\$447.65	18	\$24.87
1PM	\$900.00	✓	\$1,437.85	58	\$24.79	\$195.70	9	\$21.74
2PM	\$1,900.00		\$1,799.20	66	\$27.26	\$361.35	8	\$45.17
3PM	\$2,100.00	✓	\$2,225.00	82	\$27.13	\$425.80	16	\$26.61
4PM	\$2,300.00	✓	\$2,546.60	92	\$27.68	\$321.60	10	\$32.16
5PM	\$2,300.00	✓	\$2,818.60	102	\$27.63	\$272.00	10	\$27.20
6PM	\$2,300.00	✓	\$3,012.10	110	\$27.38	\$193.50	8	\$24.19
7PM	\$2,300.00	✓	\$3,029.60	111	\$27.29	\$17.50	1	\$17.50
8PM	\$2,300.00							
9PM	\$2,300.00							
10PM	\$2,300.00							

Powered by AMC